



**MEH**

MIDDLE EAST HARVESTERS

SOARING ABOVE

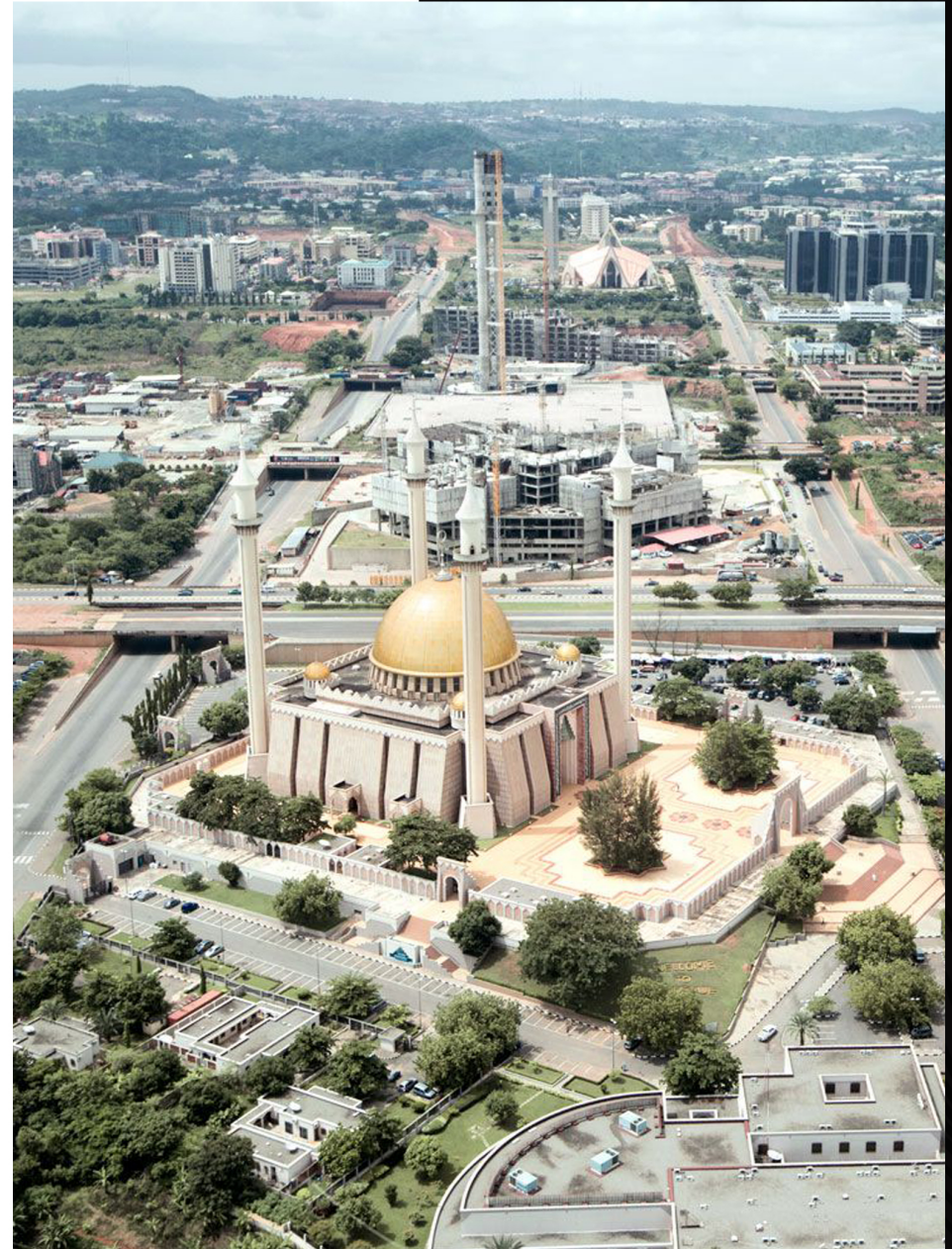


AVERAGE

## IN THE HEART OF ABUJA

The Federal Capital of Nigeria, Abuja, is favourably situated in the middle of the country.

Wuye is a neighborhood positioned directly to the west of Abuja city center. This gives it an excellent central location.





## BREAKING NEW GROUNDS

We build and deliver contemporary apartments based on our customers expectations.



## THE LITTLE THINGS MATTER

The Amazing view of the sunset from the balcony gives a gentle reminder of how the little things around us really matter.





## GET IN TOUCH WITH NATURE

Feel the touch of nature with our serene and cool green area for your relaxation and yoga.

# LIVE THE SMART LIFE

Infused with the latest technology.





## STAY FIT

Discover your true self, with courtesy of our fully equipped gym.





## HAPPY TIMES

Fully equipped, safe and secure area  
for the little ones.





Innovative architectural designs, implemented with a high standard of engineering creativity to give you the best definition of Luxury in an Apartment.

LIVE THE LIFE YOU  
ALWAYS WANTED





## THE PERFECT SPACE

CLASSIC, MINIMALIST AND CONTEMPORARY

EXQUISITELY DESIGNED





BEAUTY &  
FUNCTION

SOAK IN THE SUN AS  
YOU TAKE A DIP





## LOBBY

A space calm enough to function as a waiting/relaxation area for guests or a quick meetup area for short transactions. The foyer also comes with professional concierge services, it is indeed the perfect sit-in for residents and their visitors.



**MINI MART**  
Shop for your essentials 24 hours,  
7 days a week.





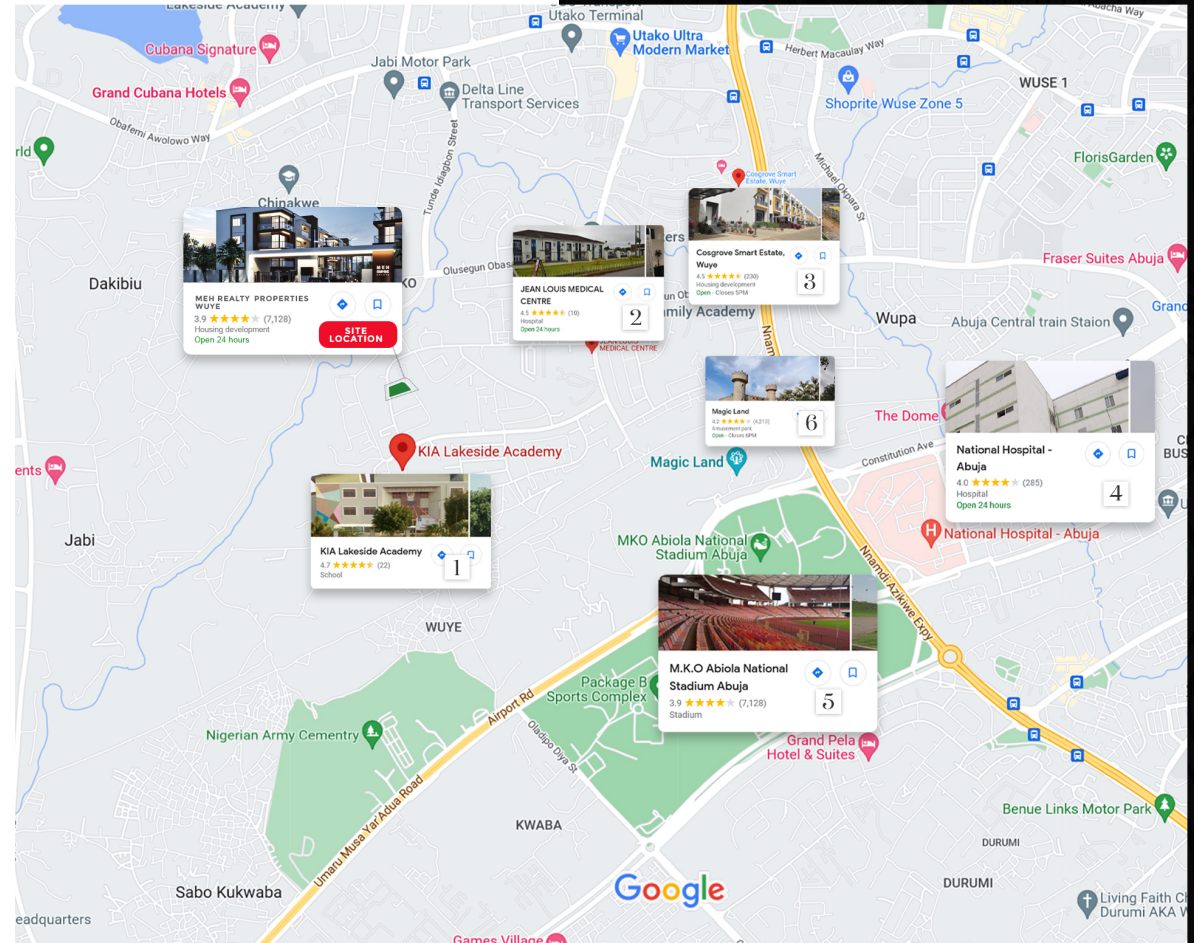
## SMART APPLICATION FEATURE

Order groceries and make payments for estate facilities from the comfort of your home, synchronizing the smart home features with your mobile device.

## MAJOR LANDMARKS

### DISTANCE FROM PROJECT SITE

1. Kia Lakeside Academy (1 minute away)
2. Jean Loius Medical Center (4 minutes away)
3. Crosgrove Smart Estate (11 minutes away)
4. National Hospital Abuja (14 minutes away)
5. M.K.O Abiola National Stadium Abuja (15 minutes away)
6. Magic Land (18 minutes away)



# THE PLAN

A P A R T M E N T F E A T U R E S



SMART HOME



PLAYING GROUND  
& KIDS AREA



SAFE & SECURE



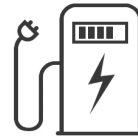
GYM & YOGA CENTER



PARKING SLOT



SWIMMING POOL



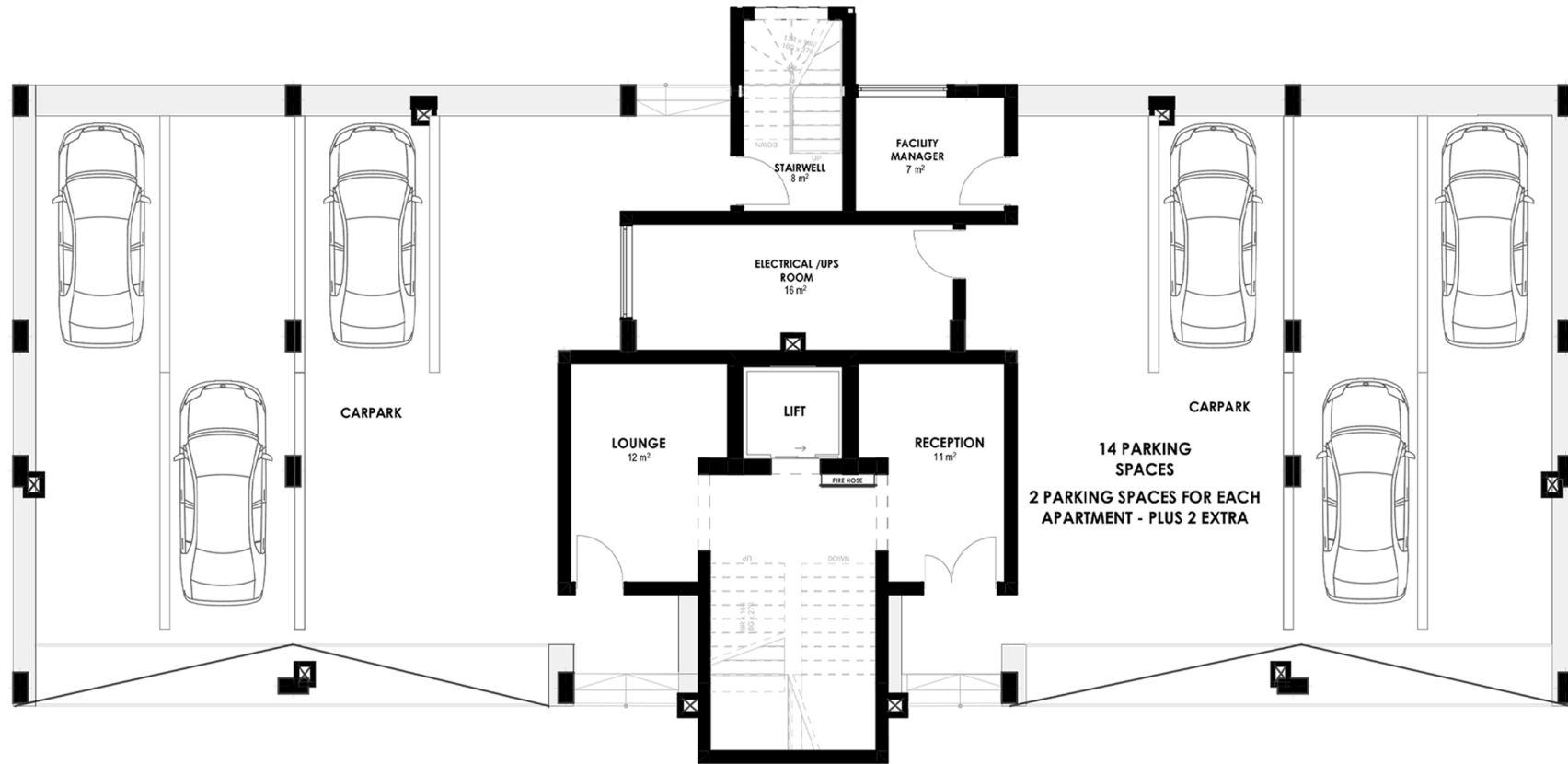
ELECTRIC CAR CHARGING



145 SQUARE METERS  
FOR EACH APARTMENT

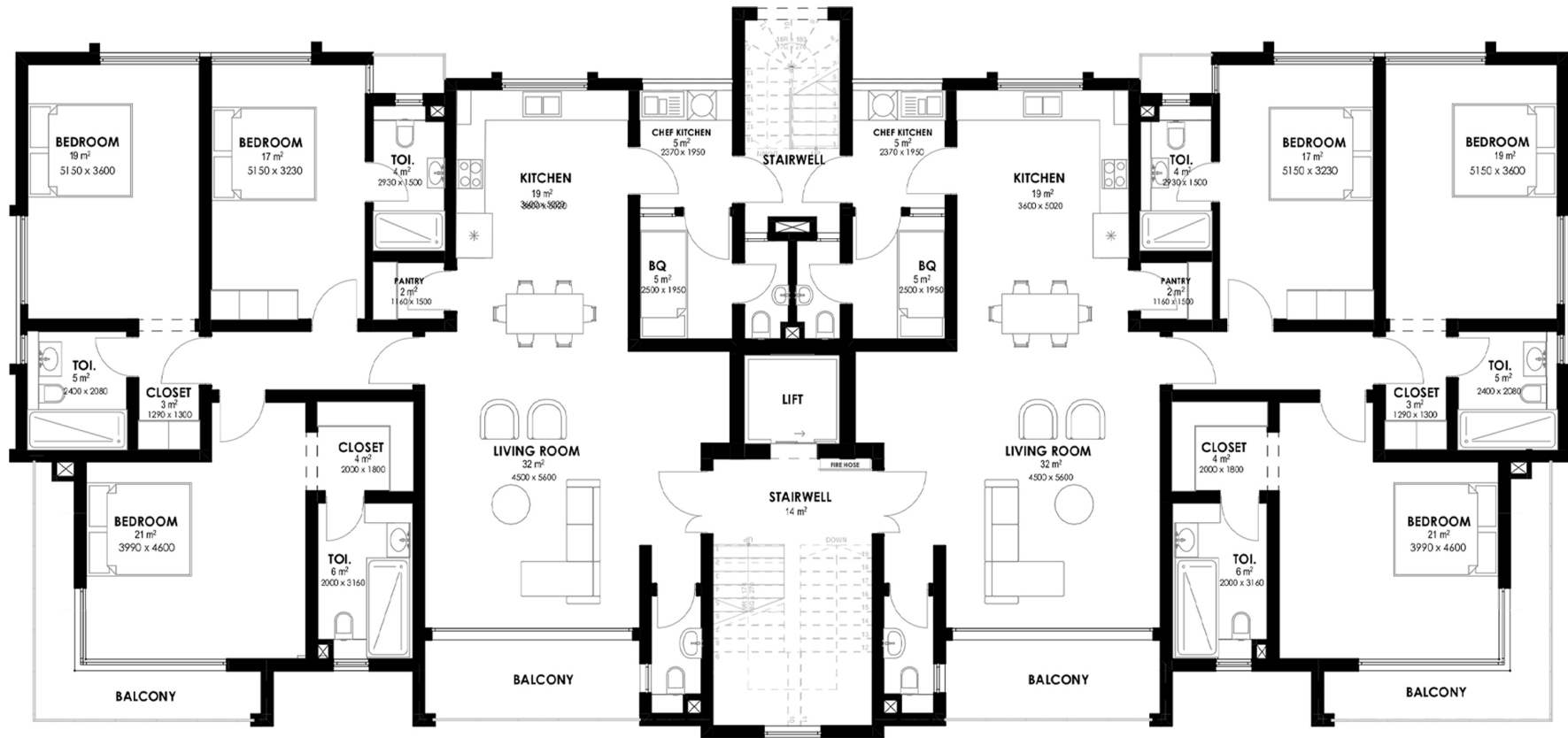
L O C A T I O N : W U Y E A B U J A

# GROUND FLOOR PLAN



- 14 PARKING SPACE IN TOTAL
- ELEVATOR FITTED
- RECEPTION AND LOUNGE AREA ON THE GROUND FLOOR
- FACILITY MANAGER / CONTROL ROOM
- 2 COVERED PARKING SPACES FOR EACH APARTMENT

# FIRST FLOOR PLAN



- TOTAL FLOOR AREA 355sqm
- AREA PER APARTMENT 145sqm
- AREA OF COMMON AREAS WITHIN THE BLOCK 65sqm
- APARTMENTS FITTED WITH ELEVATOR ACCESS
- 2 SIT OUT BALCONIES
- 3 BEDROOM + MAID ROOM

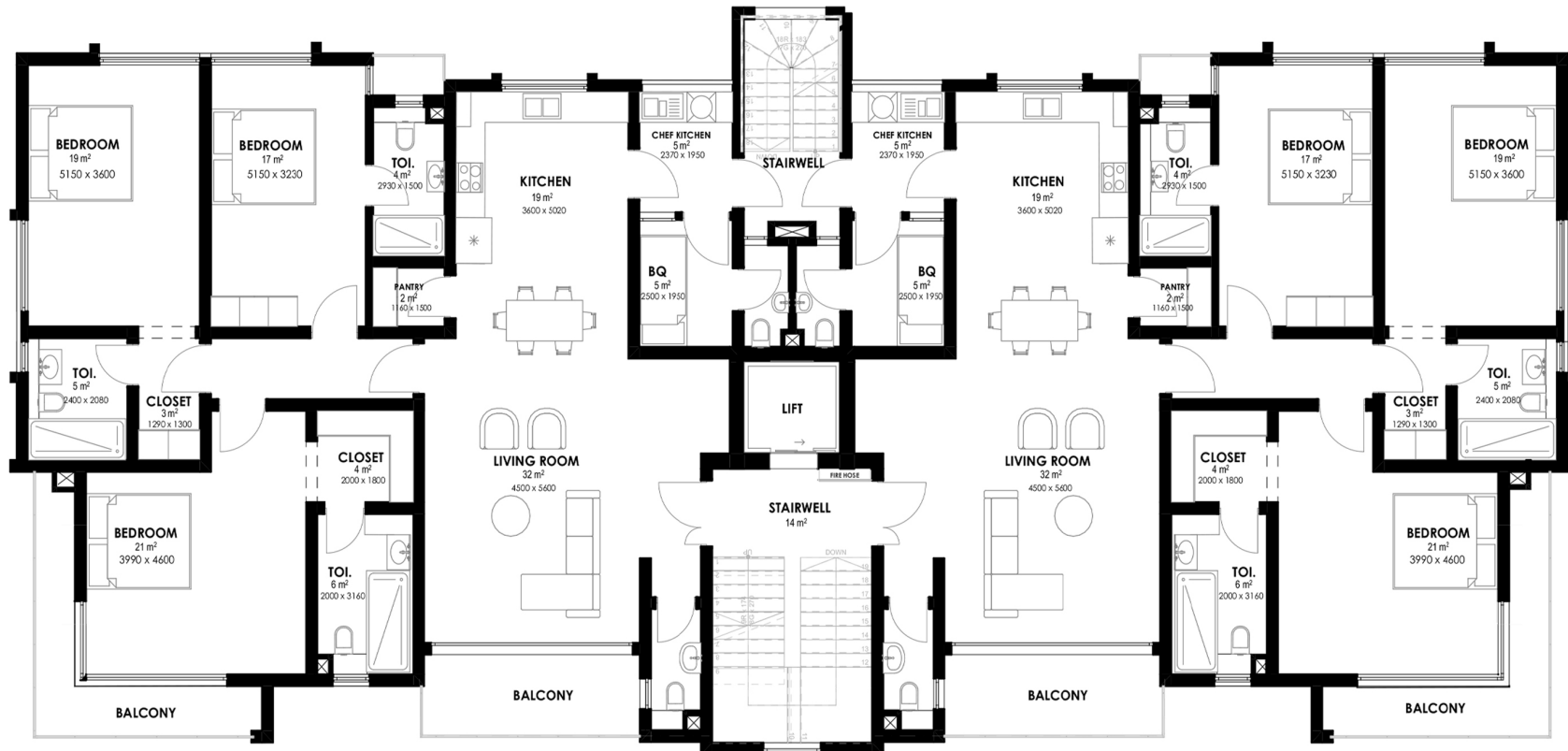
# FIRST FLOOR PLAN (BLOW UP)



- TOTAL FLOOR AREA 355sqm
- AREA PER APARTMENT 145sqm
- AREA OF COMMON AREAS WITHIN THE BLOCK 65sqm
- APARTMENTS FITTED WITH ELEVATOR ACCESS
- 2 SIT OUT BALCONIES
- 3 BEDROOM + MAID ROOM

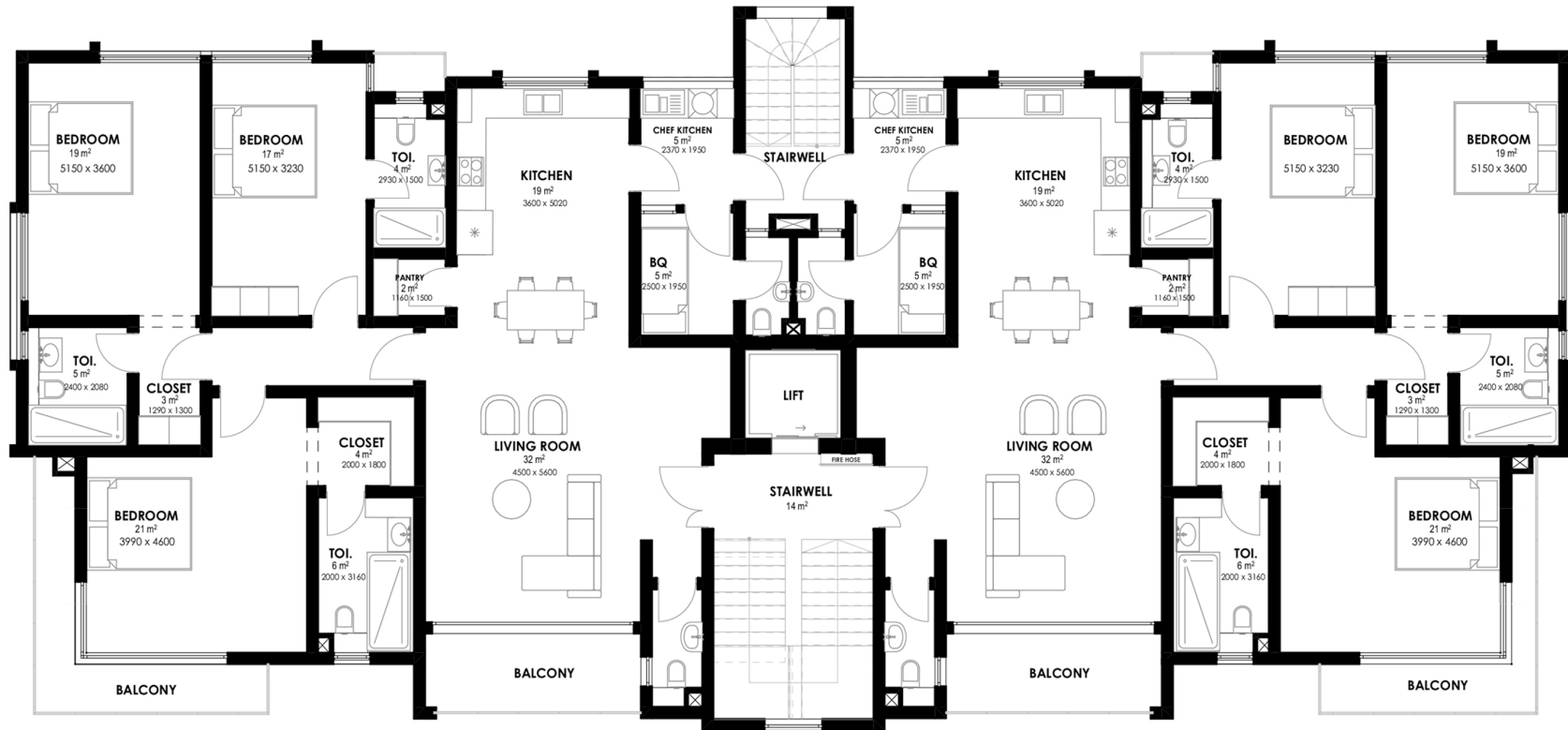


## SECOND FLOOR PLAN



- TOTAL FLOOR AREA 355sqm
- AREA PER APARTMENT 145sqm
- AREA OF COMMON AREAS WITHIN THE BLOCK 65sqm
- APARTMENTS FITTED WITH ELEVATOR ACCESS
- 2 SIT OUT BALCONIES
- 3 BEDROOM + MAID ROOM

## THIRD FLOOR PLAN



- TOTAL FLOOR AREA 355sqm
- AREA PER APARTMENT 145sqm
- AREA OF COMMON AREAS WITHIN THE BLOCK 65sqm
- APARTMENTS FITTED WITH ELEVATOR ACCESS
- 2 SIT OUT BALCONIES
- 3 BEDROOM + MAID ROOM





## CONTACT DETAILS

**HEAD OFFICE:**  
409A, 4th Floor,  
Nassima Tower,  
Sheikh Zayed Road,  
Trade Center District 1, Dubai, UAE

**ABUJA OFFICE:**  
Office E03B, 4th Floor,  
Statement Hotel Office Complex,  
1002 First Avenue,  
Central Business District,  
Abuja, Nigeria.

[www.mehrealty.com](http://www.mehrealty.com)

☎ +234 913 444 6544

📞 +234 904 000 4831